

# Quality Control Testing Official Report

12026 NE Marx St. Portland, OR 97220  
503-253-3511 / www.greenleaflabs.com  
License#: 10029074C70

## Zen Citrus Fire

Sample ID: G0H0457-02      Matrix: Industrial Hemp  
Test ID: 5005478  
Source ID:  
Date Sampled: 08/21/20      Date Accepted: 08/21/20

*Zen and Wellness*

### Results at a Glance

Total THC : 0.2829 %

Total CBD : 11.14 %

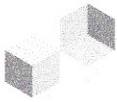
Total CBG : 0.1526 %    PASS



*Russell Kuhfeld*

Russell Kuhfeld  
Quality Officer - 8/25/2020

All QC samples met acceptance criteria of the method; data available upon request. These results relate only to the sample included on this report. The report may not be reproduced except in full, without the written permission of Green Leaf Lab.  
Lab results apply to the sample as received, samples were not collected per OAR 333-007 requirements



12025 NE Marx St. Portland, OR 97220  
 503-253-3511 / www.greenleaflabs.com  
 License#: 10029074C70

# Quality Control Testing Official Report

## Zen Citrus Fire

Sample ID: G0H0467-02 Matrix: Industrial Hemp  
 Test ID: 5005478  
 Source ID:  
 Date Sampled: 08/21/20 Date Accepted: 08/21/20

Zen and Wellness

### Potency Analysis

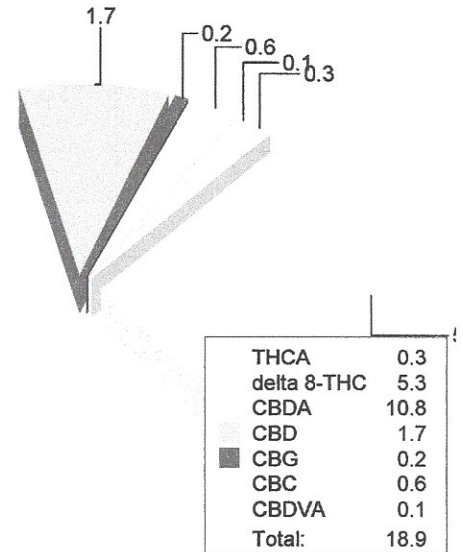
Date/Time Extracted: 08/24/20 13:30

Analysis Method/SOP: 215

Batch Identification: 2035010

Cannabinoids	LOQ (%)	% by Wt.	mg/g
Total THC	0.03632	0.2829	2.829
Total CBD	0.008300	11.14	111.4
Total CBG	0.003160	0.1526	1.526
THCA	0.01168	0.3226	3.226
delta 9-THC	0.03632	< LOQ	< LOQ
delta 8-THC	0.01796	5.286	52.86
THCV	0.02022	< LOQ	< LOQ
THCVA	0.007540	< LOQ	< LOQ
CBD	0.006220	1.692	16.92
CBDA	0.008300	10.78	107.8
CBDV	0.02000	< LOQ	< LOQ
CBDVA	0.006560	0.08629	0.8629
CBN	0.01196	< LOQ	< LOQ
CBG	0.003160	0.1526	1.526
CBGA	0.003160	< LOQ	< LOQ
CBC	0.03586	0.5851	5.851

### Cannabinoids Profile



Total THC = delta 9-THC + (THCA \* 0.877)

Total CBD = CBD + (CBDA \* 0.877)

Total CBG = CBG + (CBGA \* 0.878)

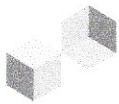
LOQ=Limit of Quantification, the lowest measurable concentration of an analyte.



*Russell Kuhfeld*

Russell Kuhfeld  
Quality Officer - 8/25/2020

All QC samples met acceptance criteria of the method; data available upon request. These results relate only to the sample included on this report. The report may not be reproduced except in full, without the written permission of Green Leaf Lab. Lab results apply to the sample as received, samples were not collected per OAR 333-007 requirements



12025 NE Marx St. Portland, OR 97220  
 503-253-3511 / www.greenleaflabs.com  
 License#: 10029074C70

# Quality Control Testing Official Report

## Quality Control Potency

Batch: 2035010 - 215-Hemp

Blank(2035010-BLK1)						
Analyte	Result	LOQ	Units	%Recovery Limits	Extracted	Analyzed
THCA	< LOQ	0.002920	%		08/24/20 13:30	08/24/20 20:27
delta 9-THC	< LOQ	0.009080	%		08/24/20 13:30	08/24/20 20:27
THCV	< LOQ	0.005055	%		08/24/20 13:30	08/24/20 20:27
THCVA	< LOQ	0.001885	%		08/24/20 13:30	08/24/20 20:27
CBD	< LOQ	0.001555	%		08/24/20 13:30	08/24/20 20:27
CBDA	< LOQ	0.002075	%		08/24/20 13:30	08/24/20 20:27
CBDV	< LOQ	0.005000	%		08/24/20 13:30	08/24/20 20:27
CBDVA	< LOQ	0.001640	%		08/24/20 13:30	08/24/20 20:27
CBN	< LOQ	0.002990	%		08/24/20 13:30	08/24/20 20:27
CBG	< LOQ	7.900E-4	%		08/24/20 13:30	08/24/20 20:27
CBGA	< LOQ	7.900E-4	%		08/24/20 13:30	08/24/20 20:27
CBC	< LOQ	0.008965	%		08/24/20 13:30	08/24/20 20:27

Reference(2035010-SRM1)						
Analyte	% Recovery	LOQ	Units	%Recovery Limits	Extracted	Analyzed
THCA	94.0	0.002920	%	80-120	08/24/20 13:30	08/24/20 20:50
delta 9-THC	90.3	0.009080	%	80-120	08/24/20 13:30	08/24/20 20:50
CBD	92.8	0.001555	%	80-120	08/24/20 13:30	08/24/20 20:50
CBDA	93.9	0.002075	%	80-120	08/24/20 13:30	08/24/20 20:50



*Russell Kuhfeld*

Russell Kuhfeld  
 Quality Officer - 8/25/2020

All QC samples met acceptance criteria of the method; data available upon request. These results relate only to the sample included on this report. The report may not be reproduced except in full, without the written permission of Green Leaf Lab.  
 Lab results apply to the sample as received, samples were not collected per OAR 333-007 requirements